

This is not a complete list!
Please check our website
for updated list of items!
New Items are added daily to
www.BerryhillAuctioneers.com

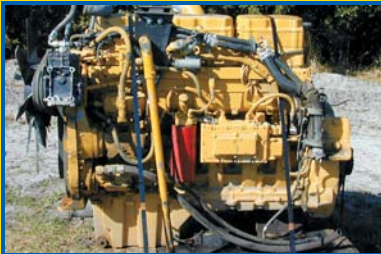
**M ANDERS
D DIESEL**

800-469-1801

WWW.MANDERSDIESEL.COM

**ABSOLU
AUC**

WEDNESDAY • FEBRUARY



Order of Sale:

- 1 MISC. TRUCK PARTS
- 2 FRAME CUT ENGINES
- 3 TAKE OUT ENGINES
- 4 CORE ENGINES
- 5 ENGINE PARTS
- 6 TRUCKS/TRAILERS/WRECKS
- 7 TANDEM CUT OFFS
- 8 TRANSMISSION TAKE OUTS
- 9 TRANSMISSION CORES
- 10 SINGLE AXLE REARS
- 11 CAB CLIPS/HOODS
- 12 ALUMINUM & STEEL WHEELS
- 13 TIRES
- 14 MISCELLANEOUS ITEMS

TRUCK TRACTORS

- 1996 MACK CH613 42" SLEEPER, TANDEM AXLE, MACK E-7 350HP W/ JAKE, T2090 TRANSMISSION, MACK 3.86 REARS, ALL ALUMINUM WHEELS
- 1994 MACK CH 613, E-7 350 JAKE, T2090, 3.86 TAPER LEAF, 22.5 ALUM. WHEEL, 187 WHEELBASE
- 1991 MACK CH 612 - EM7 275- T 2050- SINGLE AXLE, SPRING SUSPENSION, EATON REARS, SPOKE WHEELS
- 1990 WHITE/GMC - CONVENTIONAL DAY CAB SINGLE AXLE, DETROIT S 60 11.1, FULLER 7 SPEED, STEEL BUDDS, 150 WHEELBASE
- 1991 INTERNATIONAL 8100, CAT 3176, FULLER 9 SPEED TRANSMISSION, SINGLE AXLE WITH OVERLOAD SPRING SUSPENSION
- (3) 1988 FREIGHTLINER FLC CONVENTIONAL SINGLE AXLE, CAT 3406B 350HP, ATA, FULLER RT14607, 152" WHEELBASE
- (3) 1988 GMC BRIGADEERS, L10 CUMMINS, 7 SPEED, SINGLE AXLE



- 1993 FREIGHTLINER FLD 120 CATERPILLAR 3406B 350HP, FULLER 9 SPEED, SINGLE AXLE,
- 1990 FREIGHTLINER FLD 120 CATERPILLAR 3406, FULLER 9 SPEED, SINGLE AXLE, 152 WHEELBASE
- 1989 FREIGHTLINER FLD 120 CATERPILLAR 3406B 350HP FULLER 9 SPEED, SINGLE AXLE
- 1990 FREIGHTLINER FLD 120 TANDEM AXLE, CATERPILLAR 3406, 402 EATON AIR RIDE, 402 DIFFERENTIALS

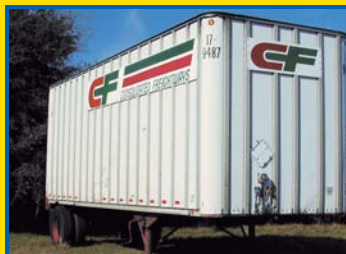
This is a short list, please go to: www.BerryhillAuctioneers.com for an updated list. *More items added daily!*

**TRUCK REBUILDERS
- EASY FIXERS**

- 1994 MACK CH613, MACK EM7, RMX 9-SPEED TRANSMISSION, MACK 4.17 RATIO, SPRING SUSPENSION, ALUM. WHEELS
- 1988 FREIGHTLINER TRI-AXLE DUMP TRUCK, CAT 3406, FULLER ROAD-RANGER 10, EATON REAR ENDS, HENDRICKSON SUSPENSION
- 1993 FORD LN 9000 DUMP TRUCK CONVENTIONAL SINGLE AXLE, 10' STEEL BOX DETROIT S 60 11.1 FULLER LO/HOLE, WITH OVERLOAD SPRINGS, 143" WHEELBASE VERY LIGHT DAMAGE, EASY FIXER

TRAILERS

- 1991 ROAD SYSTEMS VAN TRAILER 28X102, 13 6 , SINGLE AXLE, ROLL UP DOOR, ALUMINUM FLOOR
- 1989 ROAD SYSTEMS VAN TRAILER 28X102, 13 6 , SINGLE AXLE, ROLL UP DOOR, ALUMINUM FLOOR
- 1982 FRUEHAUF — 45 FLAT BED TRAILER AIR RIDE DOT READY



FORKLIFTS

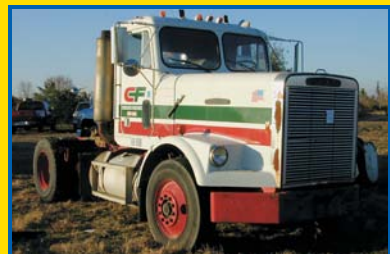
- (2) 1994 & 1991 TOYOTA FORKLIFTS 5000 LB. 2 STAGE, PROPANE

AMBULANCE

- 1989 FORD AMBULANCE FORD 7.3 AUTOMATIC TRANSMISSION WITH OVER DRIVE, SPRING SUSPENSION

**175+ Frame Cut
Engines 250+ Diesel
Engines 50+ Cores
ENGINE HIGHLIGHTS!**

- 2001 CUMMINS N14 370/435HP TAKE OUT
- 2000 CUMMINS N14 435 WITH JAKE TAKE OUT
- 1999 CUMMINS N14 370/435 HP WITH JAKE
- 1998 CUMMINS N14 435/500 HP WITH JAKE TAKE OUT
- 1996 CUMMINS N14 410 HP WITH JAKE
- 1995 CUMMINS N14 430E WITH JAKE
- 10+ CUMMINS N14 330HP TO 435HP TAKE OUTS
- 20+ CUMMINS M11, L10, 5.9 & 8.3
- 25+ CUMMINS BC I, II, III & IV FRAME CUTS
- 10+ CUMMINS BC I, II, III, IV TAKE OUTS
- CATERPILLAR 3408 FRAME CUT
- 5+ CATERPILLAR 3116 FRAME CUT
- 2 CATERPILLAR 3406E 435 TAKE OUTS
- 2 CATERPILLAR 3406E 355 TAKE OUTS
- 25+ CATERPILLAR 3406 B & FRAME CUTS
- 5+ CATERPILLAR 3406A TAKE OUTS
- 7+ CATERPILLAR 3208 & 3176 TAKE OUTS
- 4+ CATERPILLAR 3306B 300 HP
- 3+ CATERPILLAR 3406B & 3406A
- 2000 MACK ETECH 355HP TAKE OUT
- 20+ MACK E7, E 6, 676 & 675 TAKE OUTS
- 6+ MACK V8 ENGINES
- DETROIT 12.7 D DEC IV 470HP



UTE PUBLIC TION

BA BERRYHILL
AUCTIONEERS
(972) 874-1222 www.berryhillauctioneers.com

11, 2004 • LAKELAND, FLORIDA

TAKE OUTS

6+ DETROIT 12.7 60 SERIES
DDEC 2 & DDEC 3
20+ DETROIT 12.7 & 11.1 SERIES
60 FRAME CUTS
5+ DETROIT 12.7 SERIES 60
TAKE OUTS
10+ DETROIT 11.1 DDEC 2 &
DDEC 3 FRAME CUTS
15+ DETROIT 692, 671, 8.2 & 871
10+ INTERNATIONAL DT 466C,
DT 466, DT 360, 6.9, 7.3 & 9.0
TAKE OUTS
8+ INTERNATIONAL DT 466
INLINE MECH. FRAME CUTS
1995 FORD 360 FRAME CUT W/
5 SPEED
10+ FORD 6.6 & 7.8
MERCEDES VIO
2001 VOLVO VED 12C 345HP
FRAME CUT

3.70, 4.11, 4.44 & 4.63
10+ INTERNATIONAL RA 474,
RA 472, RA 355, RA 351, N
400 & N 340 3.21 3.54 3.73
4.10 4.44 5.37 AND OTHER
RATIOS
30+ MACK 4.17, 4.64, 5.05,
6.06 OTHER RATIOS

**200+
TRANSMISSIONS –
EATON, FULLER,
MACK, ROCKWELL,
SPICER & ALLISON
TAKE OUT AND
CORES**

HT 749 ALLISON TAKE OUT;
4+ EATON 14615, 12515,
EATON 16709B, EATON
16710; 10+ EATON 14710,
4+ EATON 14609B
EATON 13609B, EATON
12609B; 10+ EATON 11609;
20+ EATON 12513, EATON
9513; EATON RTL0 14613B
& 14613; 15+ EATON 910-
9509; RT0 14715
TRANSMISSION; (8) T 2090
MACK TRANSMISSIONS;
(2) RTL0 16713A
TRANSMISSIONS
(2) RTL0 14713A
TRANSMISSIONS; (2) T
2180 TAKE OUT
TRANSMISSIONS; SPICER
PSO 1490A, 1509A, 5552,
6052

RSX9145B; RT09513 TAKE
OUT; RTO 15613 TAKE
OUT; RTL0 14613A;
RMX9145B TAKE OUT; RMX
9135B TAKE OUT; RTL0
14610A TAKE OUT; RTL0
14610 A TAKE OUT; (2) RM
145A TAKE OUT; BDSL 181
TAKE OUT; (2) CM 5552 A
TAKE OUT; TRTXL 1070 12
SPEED TAKE OUT; (2) RT
910 TAKE OUT; BDSL 2052
R TAKE OUT; RMX 91510
TAKE OUT; RMX 9145 B
TAKE OUT; IVECO TRANS-
MISSION; PSO 1259A TAKE
OUT; RM 10135A TAKE

OUT; (3) RTX 14609B TAKE
OUT; RTO 14710C TAKE
OUT; (2) RT 14607A TAKE
OUT; PS 140 9 A TAKE OUT;
RM 41456A TAKE OUT; RTX
15710 C TAKE OUT; RTL0
16713A TAKE OUT; (5) X
107 TAKE OUT; X 1071
TAKE OUT

(2) RT11609A TAKE OUT; TRQ
7220; RMX 10115A2; (5)
RMX 10145; RMO 13145;
(2) RTL0 14610B; (2) RMX
9125; PS 140 7 A; RTO
12609B; (2) RTXF11609B;
(2) RTX 14609P TAKE OUT;
(2) RTX 13609B TAKE OUT;
(2) RTL0 16610B TAKE
OUT; RTX 12609B TAKE
OUT; (5) RTO 12513 TAKE
OUT; PSO 150 TAKE OUT;
(3) RTL0 14613B TAKE
OUT; 11608 LL TAKE OUT;
RTX 14710 B TAKE OUT;
RTO 14715 TAKE OUT; T
2090 TAKE OUT; T 2100
TAKE OUT; (4) T 2050; (2)
RMX 135A TAKE OUT

*We have the transmission
you need! If you do not see it
listed above, please refer to
our website:*

www.BerryhillAuctioneers.com

**SPECIAL
Consignment
JAKE BRAKES for N14,
Big Cam, and others!**

**ADDITIONAL
INVENTORY**

(3) Mack CH Cabs, NEW TAKE
OUT DRIVELINES; NEW
TAKE OUT FRAME CROSS-
MEMBERS; STEERING
BOXES, AIR RIDE SEATS,
SHIFTERS, PTO'S, DRIVE-
LINES, BLOCKS, HEADS,
TURBOS, FUEL PUMPS,
WATER PUMPS, AIR COM-
PRESSORS, STARTERS,
ALTERNATORS, DT 466
PARTS, PLASTIC FAN
BLADES, HYDRAULIC
PUMPS and much much
more .



150+ TANDEM CUTOFFS

12+ EATON DS465P, DT480,
DT460, DS440, DS461, DS480,
DS404, DS402 VARIOUS
RATIOS
(2) ROCKWELL RP 46140 46,000
LB.
8+ ROCKWELL SSHD 4.11 4.33
4.63 & 5.29
30+ ROCKWELL RD 40L45 2.79-
2.80-2.93-3.07-3.42-3.73-3.91-
4.10-4.88
10+ ROCKWELL SQ 100 3.42,
3.55, 3.73, 4.10, 4.33, 4.63,
5.29
10+ ROCKWELL SQHD - 3.55,

LATE CONSIGNMENT!

**Safety (American Safety): Spill
Booms, Signs, & Other Misc.
Safety Items**

**Brake (Bendix): Brake pads,
Drums, Loaded & Unloaded
Calipers, & Misc. Parts.**

**Chrome Accessories (New Era):
Top Hats, Hub Caps, Nut Covers,
Etc.**

**Suspension (Spicer): Misc. Ball
joints, U-Joints, Bushings, Clutch
AC (MEI) 15 Kenworth Condenser
PN 041010**

